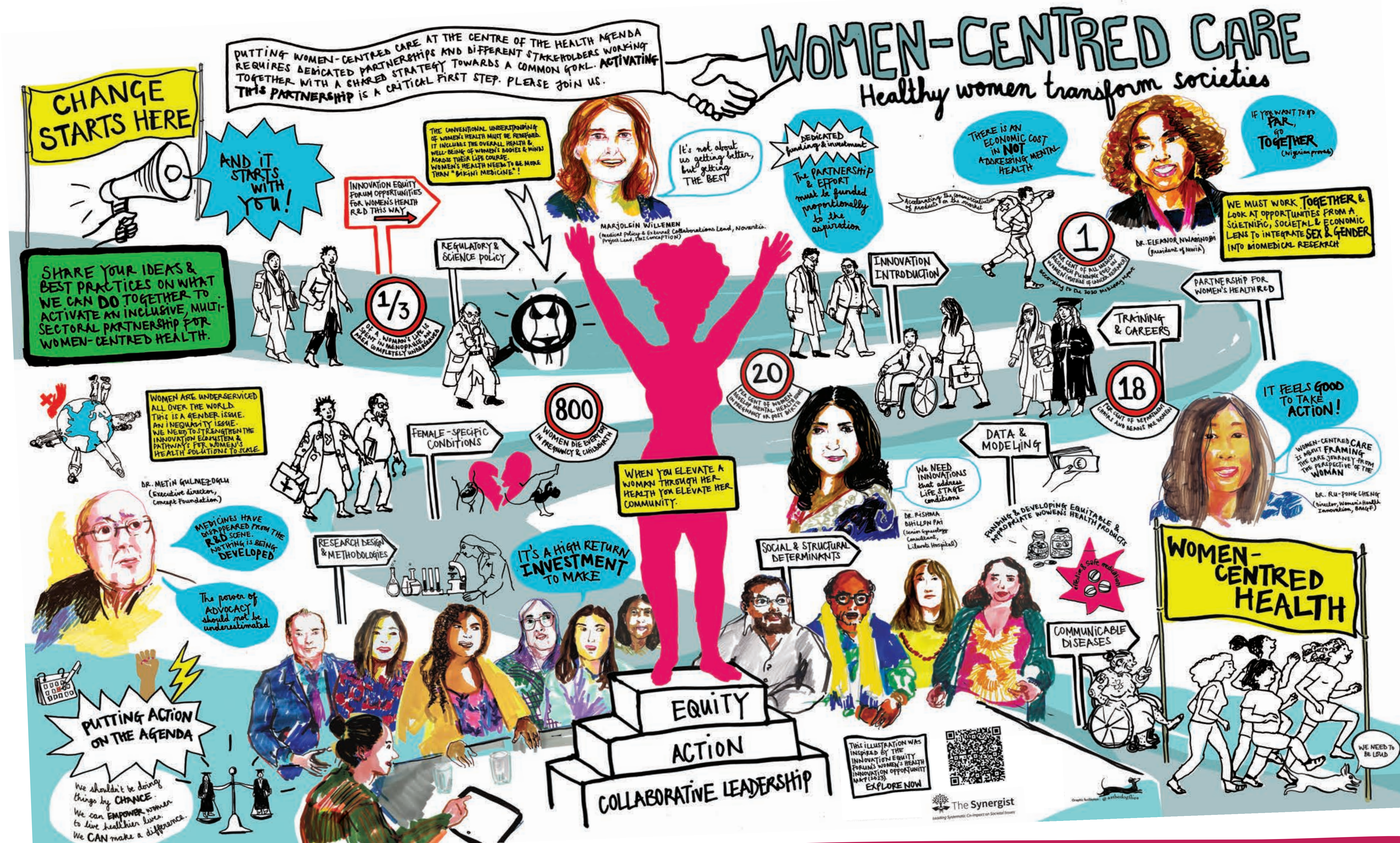


# THE WOMEN'S HEALTH CATALYST

Partnering with women & communities to ensure universal access to the best possible health outcomes



We bring patient engagement knowledge & expertise to women's health, and we bring the crucial issues of women's health to the patient engagement community.

peof

PEOF2025  
WOMEN'S HEALTH CATALYST: What If Patient-Centric Personalised Care Truly Reflected Women's Needs?

From Tailored Approaches in Shared Decision-Making to System Change

11/04/2025

FROM INSIGHTS TO IMPACT  
Based on the workshop insights, we identified that the patient community would value:

- More inclusive, respectful provider-patient conversations
- Shared decision-making tools that reflect their real-life needs
- Recognition of life stages within a holistic care model
- Whole-person care that reflects the complexity of women's lives
- Ongoing collaboration with the patient community

BARRIERS TO RECRUITING & RETAINING WOMEN IN CLINICAL STUDIES

Asia & Oceania Region	Latin America Region	Europe/North America Region	Africa Region
<b>Logistical Barriers:</b> <ul style="list-style-type: none"> <li>Lack of diagnostic infrastructure to run CS</li> <li>Shortages of basic materials, (e.g. gaskets)</li> <li>Workflow disruptions</li> </ul>	<b>Logistical Barriers:</b> <ul style="list-style-type: none"> <li>Limited access to transportation</li> <li>Lack of childcare</li> <li>Limited financial incentives</li> </ul>	<b>Logistical Barriers:</b> <ul style="list-style-type: none"> <li>Lack of specialists focusing on women's conditions</li> <li>Lack of transportation to clinical sites</li> <li>Lack of housing options near clinical sites</li> </ul>	<b>Logistical Barriers:</b> <ul style="list-style-type: none"> <li>Lack of infrastructure</li> <li>Lack of transportation to clinical sites</li> <li>Lack of housing options near clinical sites</li> </ul>
<b>Systemic Barriers:</b> <ul style="list-style-type: none"> <li>CS are not part of the routine of care, limiting dialogue on clinical research</li> <li>Lack of region-specific data and regional representation in CS design</li> </ul>	<b>Systemic Barriers:</b> <ul style="list-style-type: none"> <li>Unlimited trust and continuity of medical conversations due to lack of a primary HCP in the public healthcare system</li> <li>Clinical competition due to fear of losing access to services if they commit to a clinical study</li> </ul>	<b>Systemic Barriers:</b> <ul style="list-style-type: none"> <li>Lack of lay language materials and/or their adaptation to cultural and language differences</li> <li>Lack of infrastructure and accessible information</li> </ul>	<b>Systemic Barriers:</b> <ul style="list-style-type: none"> <li>Limited adaptation of the study design to regional realities</li> <li>Inclusion criteria not aligned with cultural/social realities and needs</li> <li>Lack of infrastructure / establishment</li> </ul>
<b>Situational Barriers:</b> <ul style="list-style-type: none"> <li>Religious/cultural stigma and patriarchal societies impose barriers for women to access CS</li> <li>Lack of ownership by women of their own health</li> </ul>	<b>Situational Barriers:</b> <ul style="list-style-type: none"> <li>Low prevalence of certain conditions (e.g. rare conditions) leading to limited patient numbers per site</li> <li>Family responsibilities</li> </ul>	<b>Situational Barriers:</b> <ul style="list-style-type: none"> <li>Limiting inclusion/exclusion criteria, often clinical studies focus predominantly on women of reproductive age, with menopausal and older women typically excluded</li> </ul>	<b>Situational Barriers:</b> <ul style="list-style-type: none"> <li>Patriarchal systems in some communities impose barriers for women to access CS</li> <li>Digital divide in rural areas</li> </ul>

We are on a unique mission to evolve women's health from isolated efforts to an integrated ecosystem, grounded in shared best practices.

**Our Vision** is that women throughout their life course have the best possible outcomes and quality of life.

FOLLOW US ON  
WOMEN'S  
HEALTH  
SYNAPSE



ACCESS THE  
ARTWORK HERE

We are looking for partners to co-create & pilot women-centric resources for care discussions & research in two or more condition areas!

Connect with Helena at  
Helena@thesynergist.org