



Ministry of National Health  
Services Regulations & Coordination  
GOVERNMENT OF PAKISTAN



World Health  
Organization  
Pakistan

# Women Health & Development Index (WHDI)

A measure of women's wellbeing in LMICs

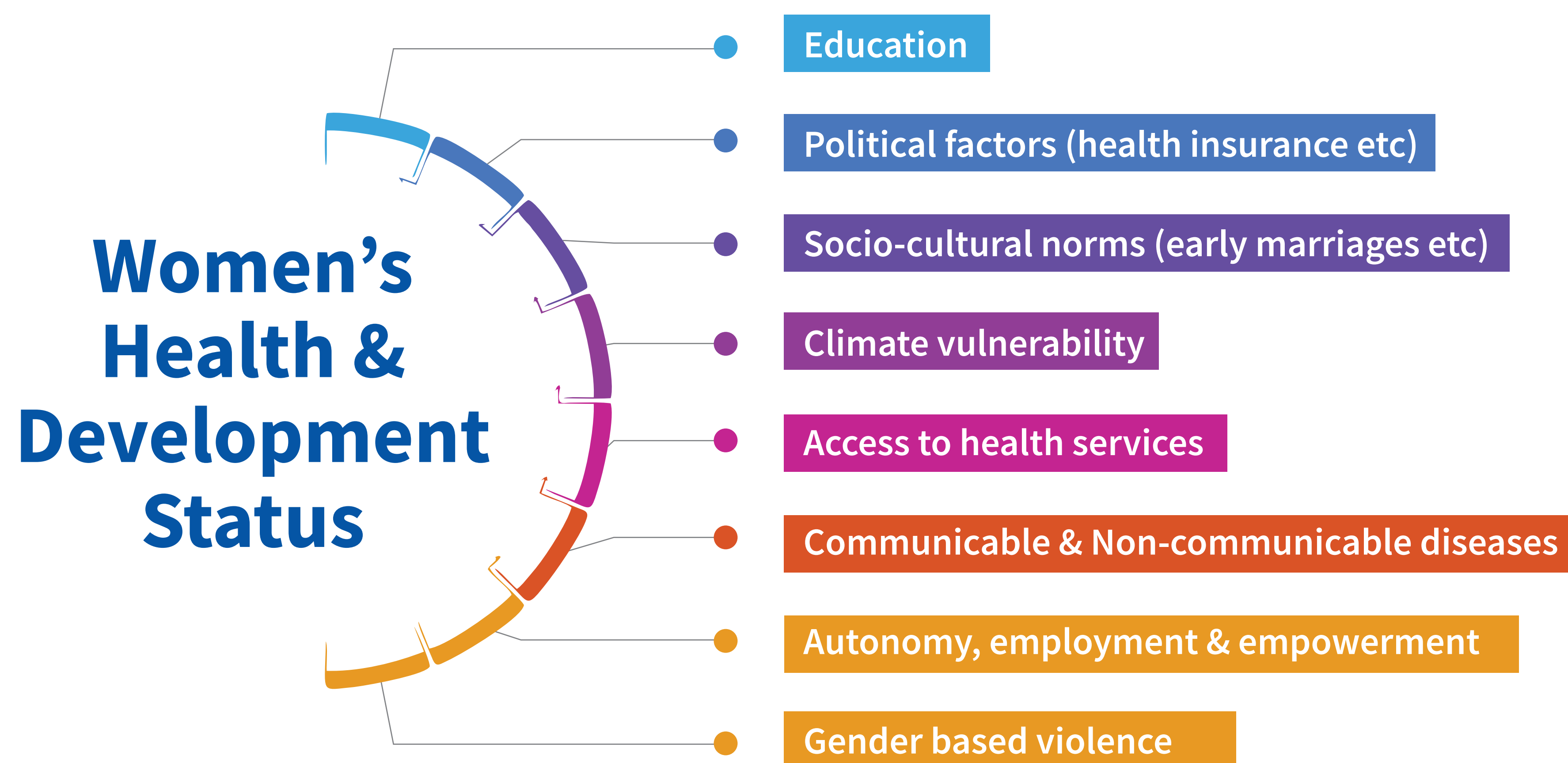


CONCEPT: Qudsia Uzma, Sayema Awais, Maida Umar, Zohaib Khan, Ellen Thom, Dan Fang, Mohamed Afifi, Jenny Cresswell

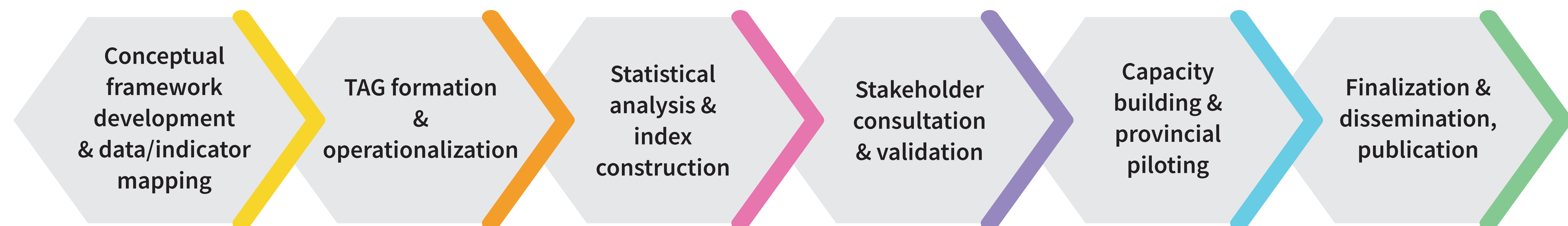
COLLABORATORS: Ministry of Planning, Development & Special Initiatives; Ministry of National Health Services, Regulation & Coordination, National Commission on Status of Women, Pakistan Institute of Development Economics

## BACKGROUND & RATIONALE

- Women's health & wellbeing are shaped by multiple factors beyond reproductive health. Many conditions disproportionately affect women and girls.
- Women's health & wellbeing remain poorly understood due to outdated metrics which overlook factors that affect women intergenerationally at global & local level ;
- Weak cross-sector integration & insufficient data disaggregation obscure critical disparities;
- Women & girls comprise almost half of Pakistan's population; sustainable development and inclusive growth hinge on the full participation and empowerment of women & girls;
- WHDI will be an innovative index providing a comprehensive measure of women's wellbeing across the life course by integrating health outcomes with intersectional domains like social, cultural, political environmental and economic factors.



## METHODOLOGY



### Data Mapping & Indicator Standardization

- Systematic mapping of publicly available and accessible data sources.
- Proxy indicators will be constructed where needed and feasible – in consultation with sectoral experts.

### Development/Validation of WHDI

- National Technical Advisory Group formation.
- Consultative process at national and sub-national levels.

### Scalability & Sustainability

- Overtime, Average Annual Rate of Change will measure longitudinal change in WHDI.
- WHDI will be regressed against GDP to assess the relationship between economic growth & women health outcomes.

## KEY PERFORMANCE INDICATORS

